

# Week 1 IT 1 Board Game 1

## Who does what

**Aim:** To reinforce sentence structure

**Number of players:** 2-3

**How to play:**

- The children(2-3) have a base board each, containing 4 incomplete sentences and cards (see next 4 slides).
- The pile of cards is placed face down on the table and the children take turns to pick a card and see if the word fits any of their sentences.
- If the word fits, they keep the card and put it on their base board.
- If not, the card is returned to the bottom of the pile and the next child has a turn.
- The object of the game is to be the first to fill the board with the missing words.



Sam

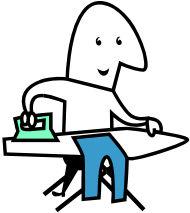
?

sausages.



Amy paints

?



?

irons trousers.



Sara reads

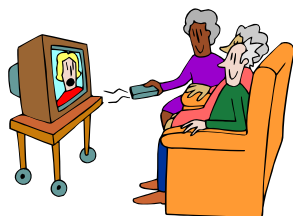
?



Jack

?

burgers.



Grandma watches

?



?

climbs a ladder.



Mum

kicks a

?



?

eats burgers.



Mum climbs a

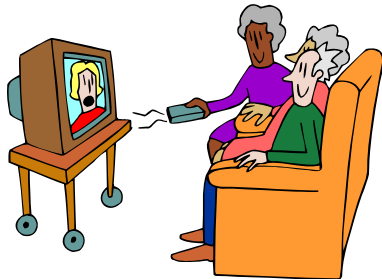
?



Mum

?

a ball.



?

watches Television

cooks

ball

cooks

ball

pictures

Mum

pictures

Mum

Dad

Jack

Dad

Jack

books

kicks

books

kicks

eats

Grandma

eats

Grandma

television

ladder

television

ladder