

Reversible word order Bingo (for 2 players)

Aim: To reinforce sentence structure

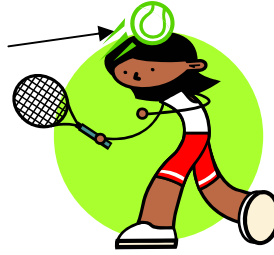
You will need: a base board for each player and the small cards to share

How to play:

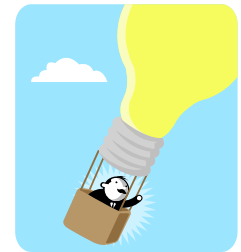
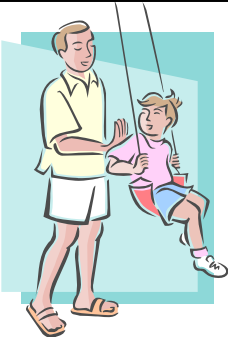
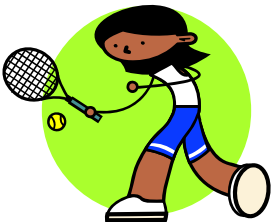
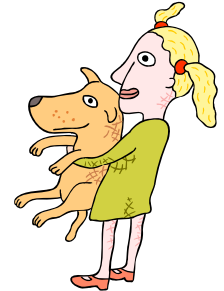
- Each child has an 8-picture base board (see next slide that requires cutting in two) and the pile of small cards is put facedown on the table.
- Each child then has a turn to take a sentence, read it and match the word order of the sentence to any of the pictures on their board.
- If the child has the sentence which matches a picture on their baseboard, they put the card over it.
- If the sentence does not match any of their pictures they return it to the bottom of the sentence pile.
- The next child then has a turn.
- The object is to be the first to fill the board.



thanks



thanks



| | | | |
|---|---|--|--|
| The <i>man</i> hits the <i>ball</i> . | The <i>ball</i> hits the <i>man</i> . | The <i>dog</i> chases the <i>man</i> . | The <i>man</i> carries the <i>balloon</i> . |
| The <i>man</i> carries the <i>woman</i> . | The <i>balloon</i> carries the <i>man</i> . | The <i>man</i> pushes the <i>girl</i> . | The <i>girl</i> hits the <i>ball</i> . |
| The <i>woman</i> thanks the <i>man</i> . | The <i>man</i> thanks the <i>woman</i> . | The <i>man</i> carries the <i>boy</i> . | The <i>ball</i> hits the <i>girl</i> . |
| The <i>boy</i> kisses the <i>woman</i> . | The <i>woman</i> kisses the <i>boy</i> . | The <i>girl</i> carries the <i>dog</i> . | The <i>boy</i> chases the <i>butterfly</i> . |